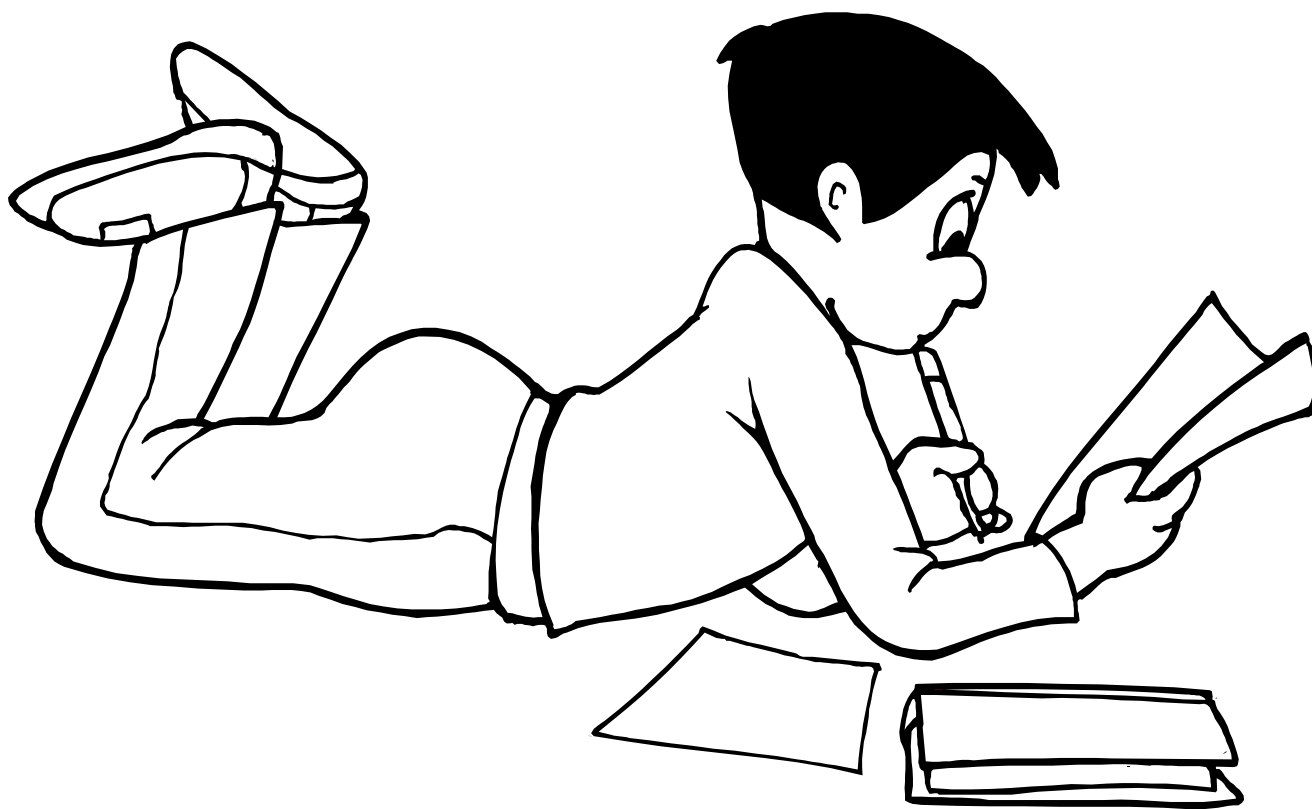
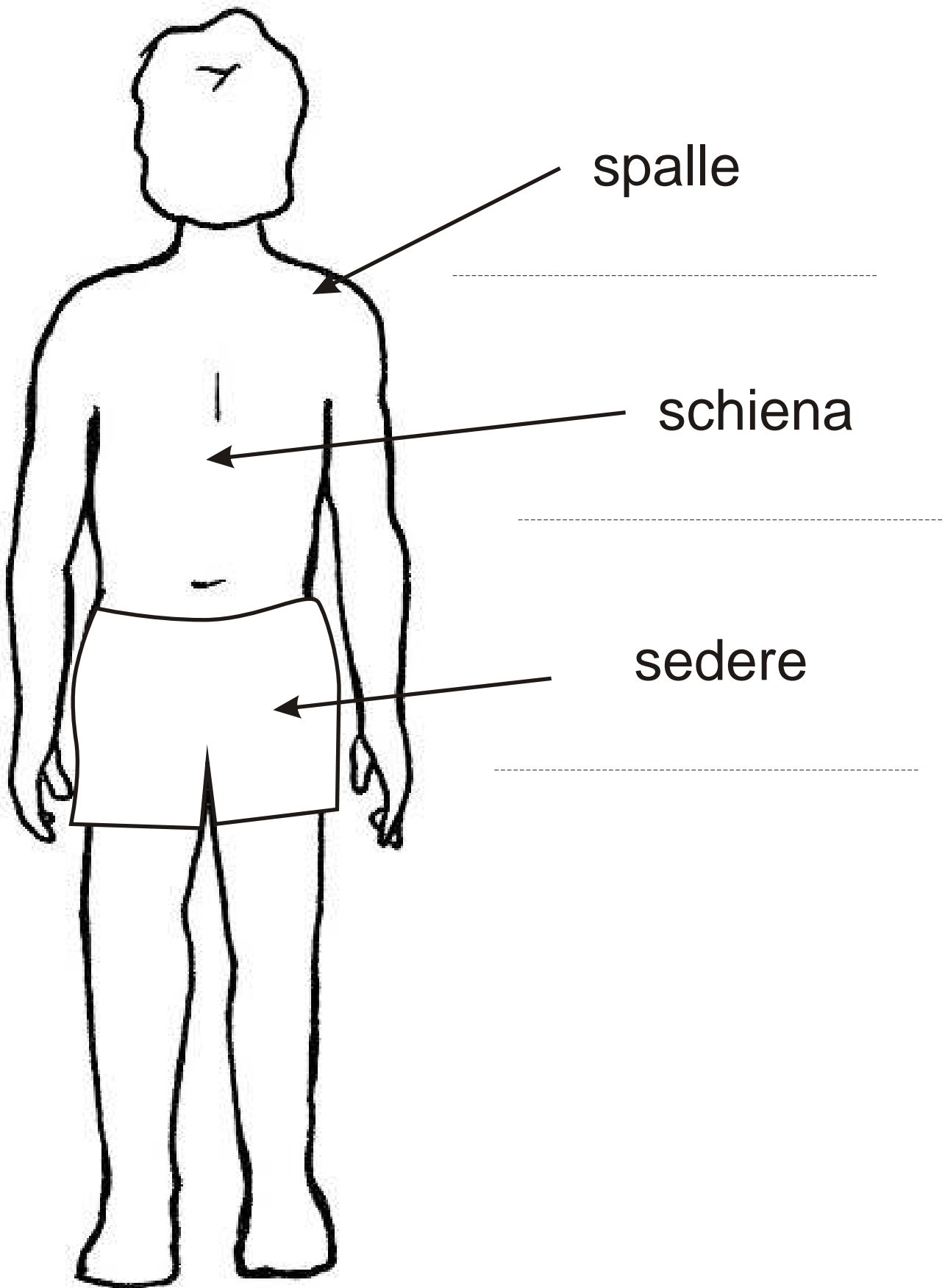


Ss ↷



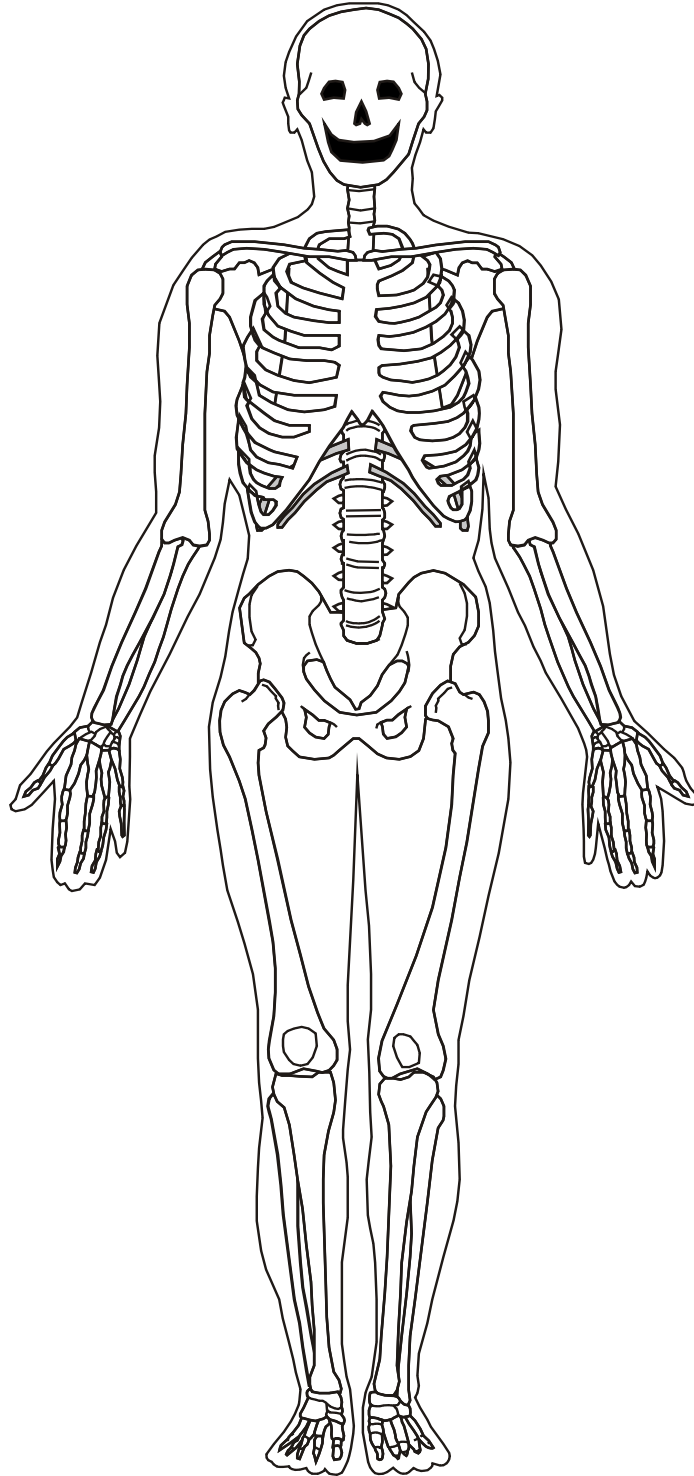
Ss





alfabeto del corpo

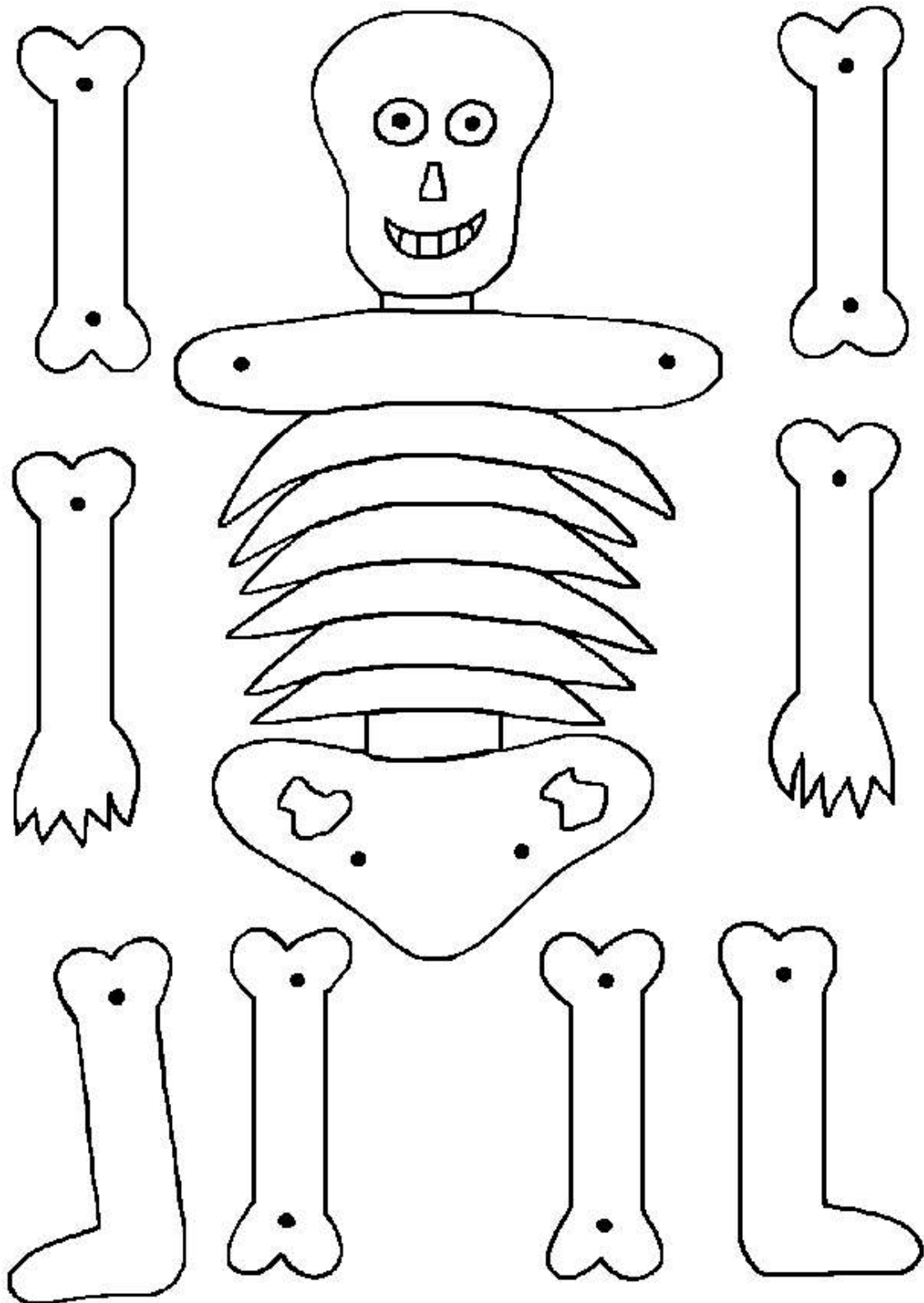
Ossa dello scheletro



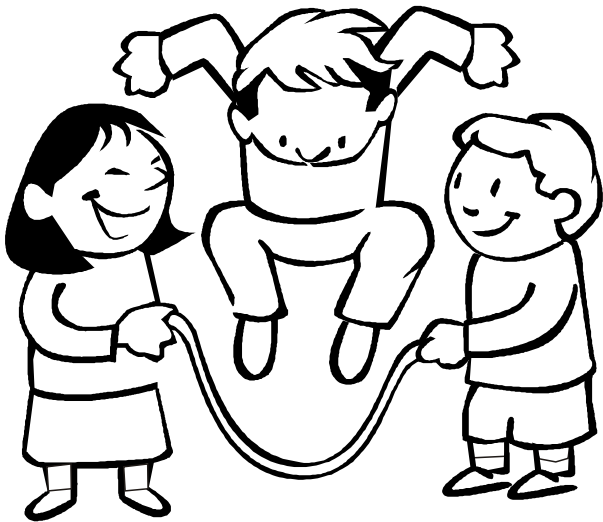
sostengono, proteggono e permettono il movimento

alfabeto del corpo

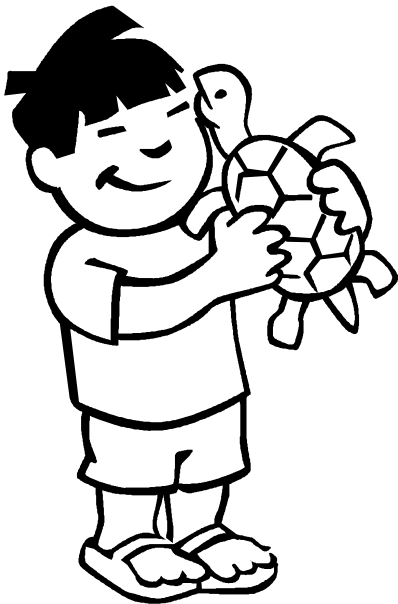
SCHELETRINO



alfabeto del corpo



saltare



sollevare



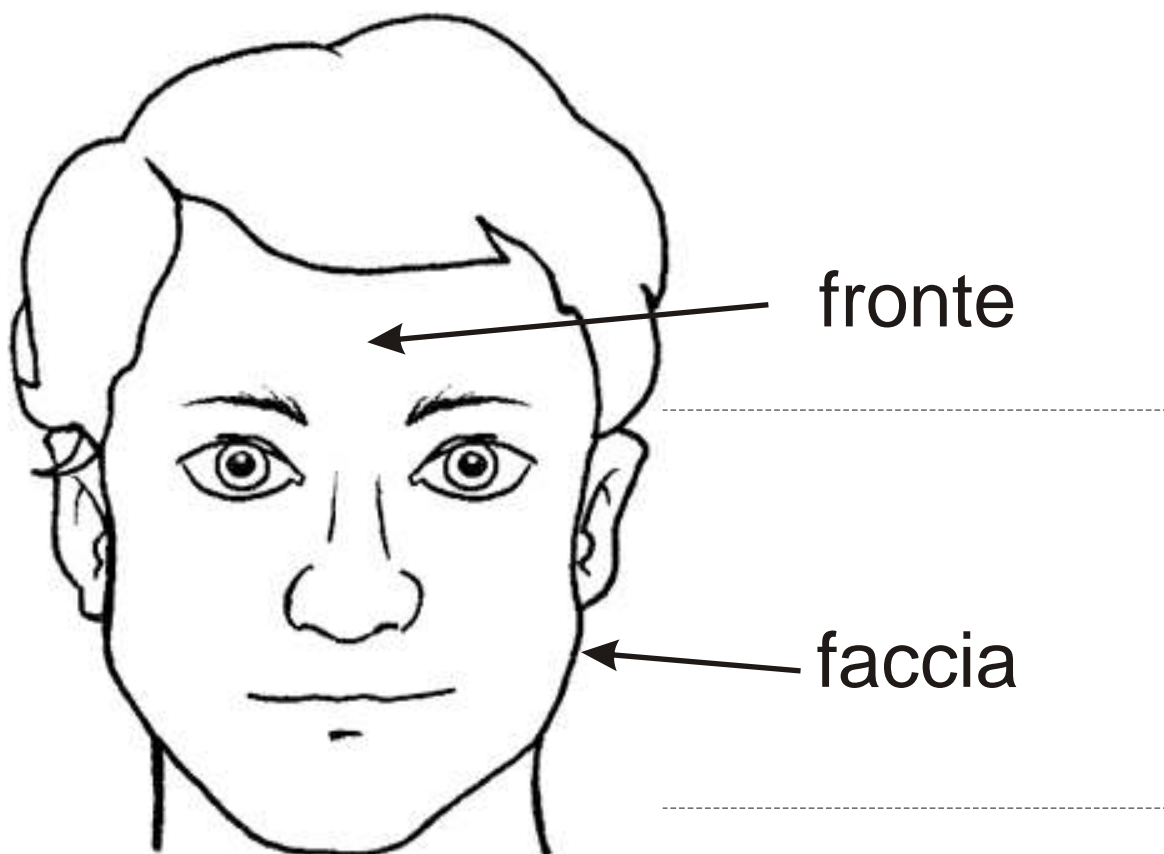
soffiare

F f f

F f



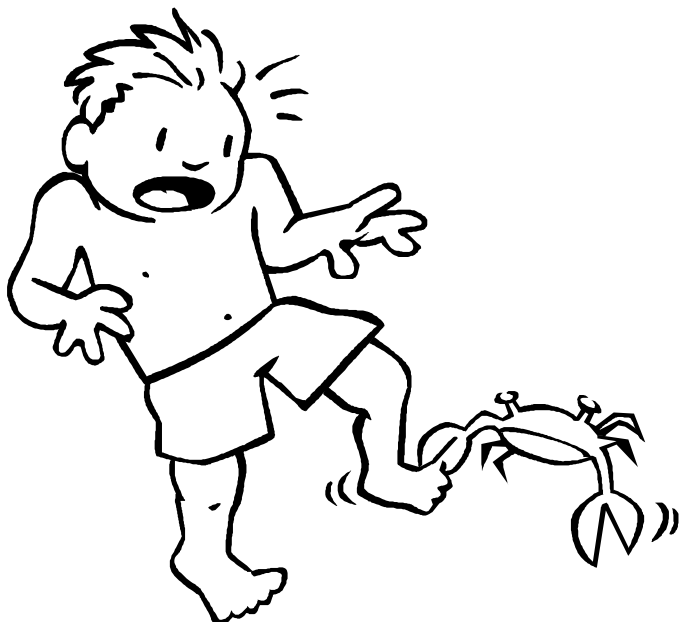
alfabeto del corpo



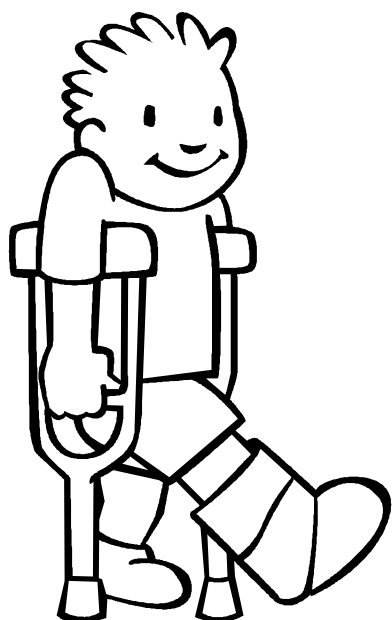
di fronte



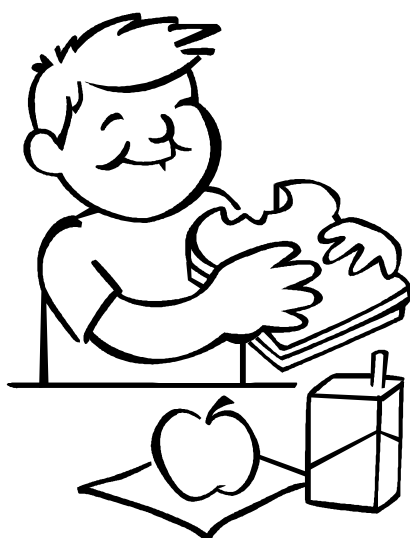
di fianco



ferirsi



fasciarsi



... che fame!
