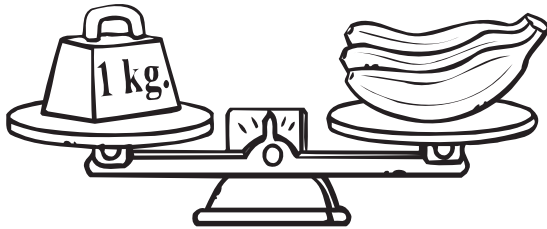


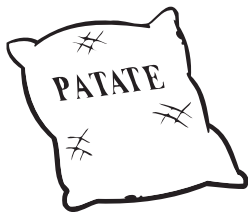
Confronta i pesi



Queste banane pesano 1 kg

Metti una crocetta sulla frase corretta

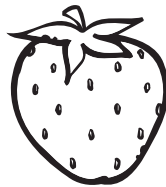
1.



a) $< 1 \text{ kg}$

b) $> 1 \text{ kg}$

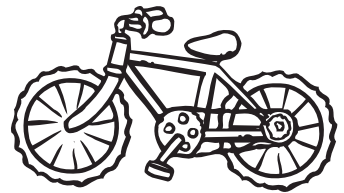
2.



a) $< 1 \text{ kg}$

b) $> 1 \text{ kg}$

3.



a) $< 1 \text{ kg}$

b) $> 1 \text{ kg}$

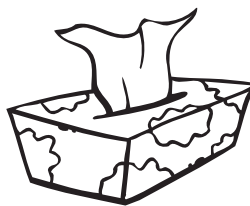
4.



a) $< 1 \text{ kg}$

b) $> 1 \text{ kg}$

5.



a) $< 1 \text{ kg}$

b) $> 1 \text{ kg}$

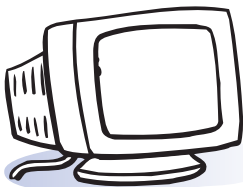
6.



a) $< 1 \text{ kg}$

b) $> 1 \text{ kg}$

7.



a) $< 1 \text{ kg}$

b) $> 1 \text{ kg}$

8.



a) $< 1 \text{ kg}$

b) $> 1 \text{ kg}$

9.



a) $< 1 \text{ kg}$

b) $> 1 \text{ kg}$